

Ion fragmentation of small molecules in mass spectrometry

Jeevan Prasain

jprasain@uab.edu

6-2612

Feb 4, 2013

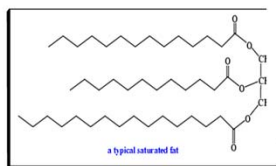
Class overview

- Introduction to tandem mass spectrometry (MS/MS)
- Use of MS/MS for structure elucidation of metabolites
- MS/MS for substructure analysis of taxins

Feb 4, 2013

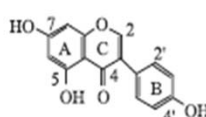
Small molecules are important!!

- 89% of all known drugs and 50% of all drugs are derived from pre-existing metabolites.
- Small molecules are cofactors and signalling molecules to 1000's of proteins.
- 100,000 (lipidome)

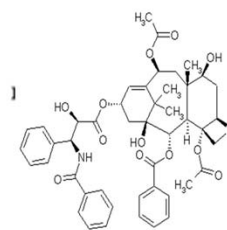


Feb 4, 2013

Triglycerides



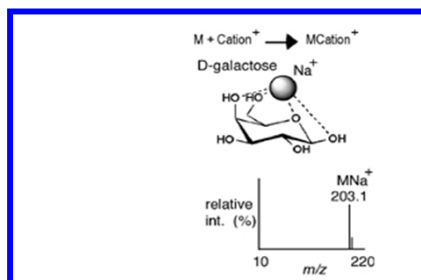
Genistein
(a plant secondary metabolite)



Taxol

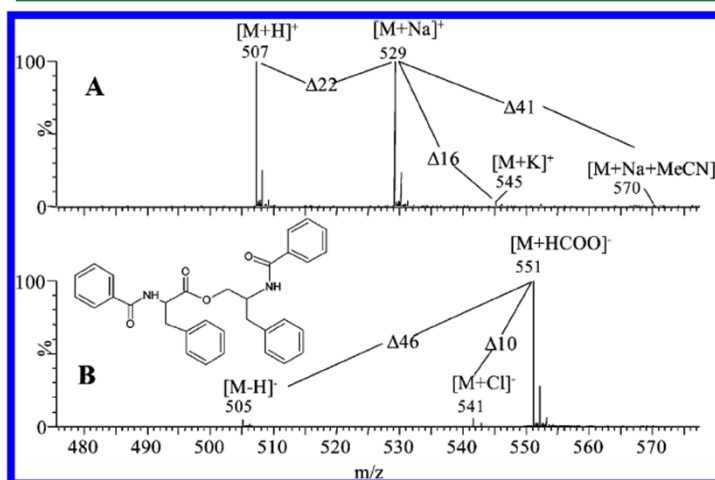
Nomenclature: the main names and acronyms used in mass spectrometry

- **Molecular ion:** Ion formed by addition or the removal of one or several electrons to or from the sample molecules- **Electron Impact (EI-MS)**. $M + e^- \rightarrow M^{+} + 2e^-$
- **Adduct Ion:** Ion formed through interaction of two species and containing all the atoms of one of them plus one or several atoms of them (e.g. alkali, ammonium).



Feb 4, 2013

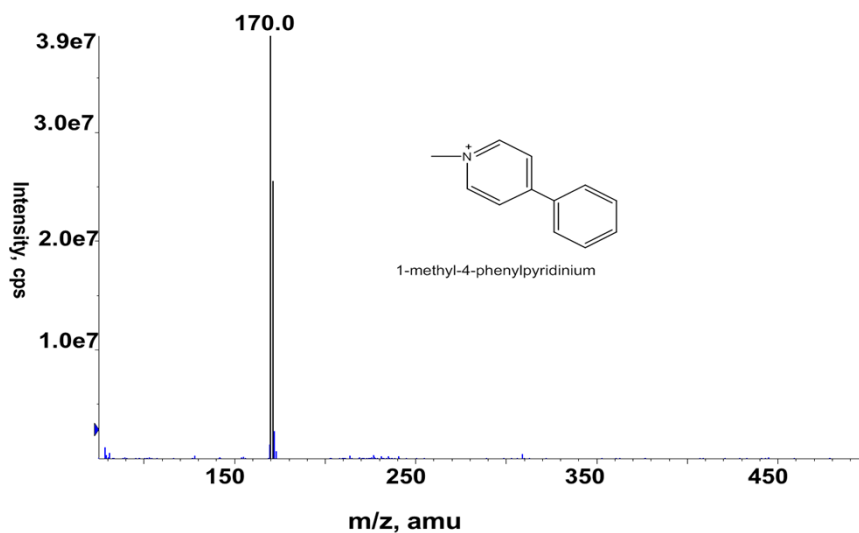
Adduct formation in +/-ve ion modes



Feb 4, 2013

Nielsen et al., J Nat Prod. 2011

Molecules with inherent positive charge- molecular weight and m/z are same



Feb 4, 2013

Contd..

- **Pseudomolecular ion:** Ion originating from the analyte molecule by abstraction of a proton $[M-H]^-$ or addition of proton $[M+H]^+$
- **Tandem mass spectrometry (Cooks, 1976): MS/MS (McLafferty, 1978), tandem in space or time**
- **Precursor ion/parent ion:** Ions undergoing fragmentation.
- **Product ion/daughter ion:** Ions resulting from parent/precursor ions.
- **Neutral loss:** Fragments lost as neutral molecules
- **In positive ionization mode**, a trace of formic acid is often added to aid protonation of the sample molecules; in **negative ionization mode** a trace of ammonia solution or a volatile amine is added to aid deprotonation of the sample molecules. Proteins and peptides are usually analysed under positive ionization conditions and polyphenols and acids under negative ionization conditions. In all cases, the m/z scale must be calibrated.

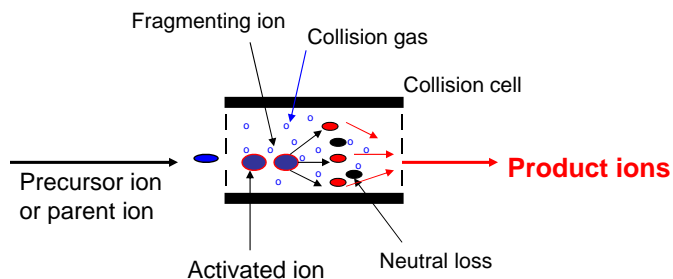
Feb 4, 2013

Isotopic distribution and MS

- **1H = 99.9%, 2H = 0.02%**
- **12C = 98.9%, 13C = 1.1%**
- **35Cl = 68.1%, 37Cl = 31.9%**
- **Monoisotopic mass - the mass of the most abundant isotope**
- **Average mass- the abundance weighted mass of all isotopic components.**

Feb 4, 2013

What is Collision Induced Dissociation (CID) or Collisionally Activated Dissociation (CAD) ?



Schematic of CID fragmentation

Feb 4, 2013

Applications of MS/MS

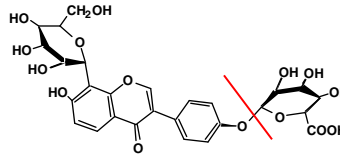
- **Pharmaceuticals**- Identification and quantification of drug metabolites, PK/PD
- **Academic/biotechnology**- analysis of protein/peptides, authentication and profiling of chemical components in a crude mixture, substructure analysis of unknown components
- **Clinical**- eg. neonatal screening, steroids in athletes etc.
- **Environment**- eg. dioxins in fish..
- **Geological**- eg. oil compositions...

Feb 4, 2013

Interpreting MS/MS spectra

- Likely sites of protonation or deprotonation.
- Likely leaving group.
- Literature study

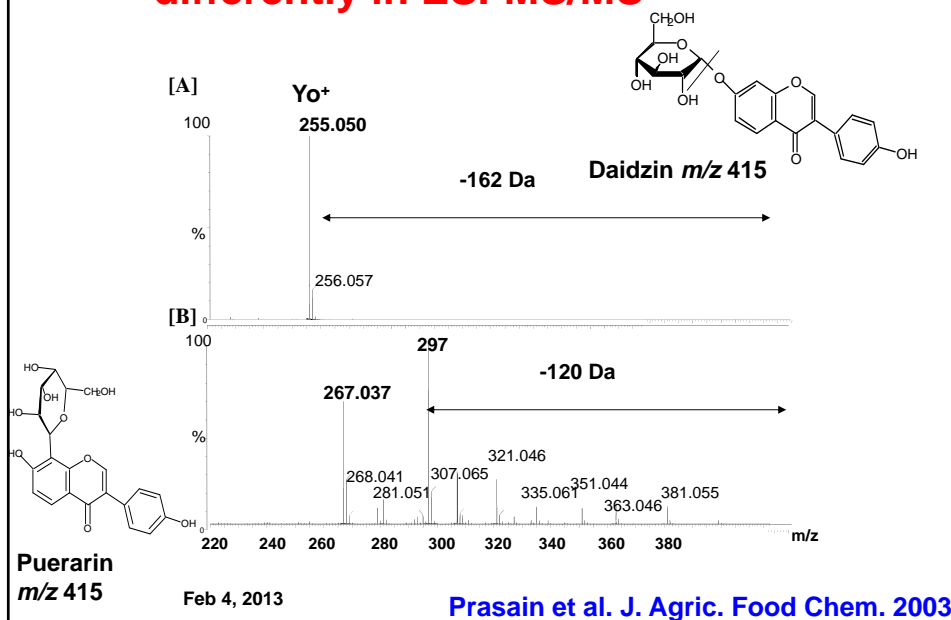
Where are the sites of deprotonation/protonation?
What is the most likely leaving group in this molecule?



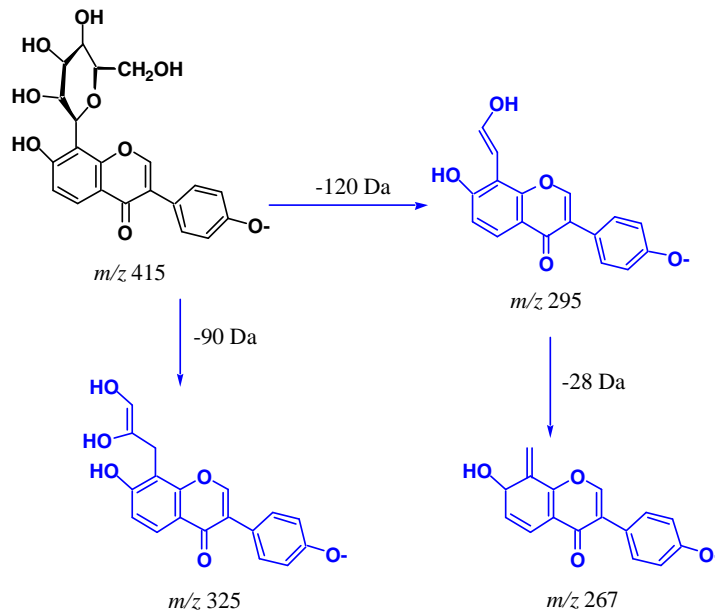
Fragmentation always follows the basic rules of chemistry

Feb 4, 2013

O- and C-glucosides fragment differently in ESI-MS/MS

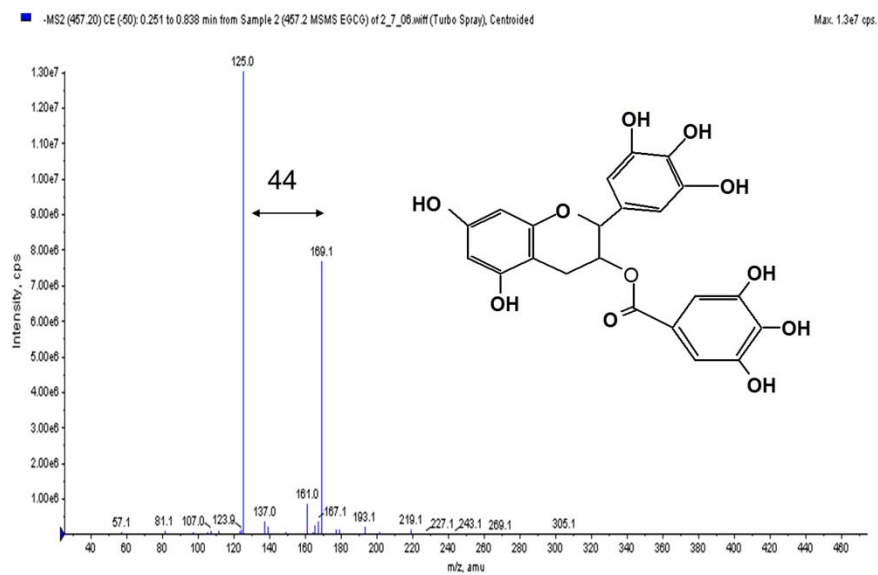


Possible product ions of puerarin m/z 415 in MS/MS



Feb 4, 2013

Intensity of product ions indicates their stability - ions bearing aromatic ring are more intense

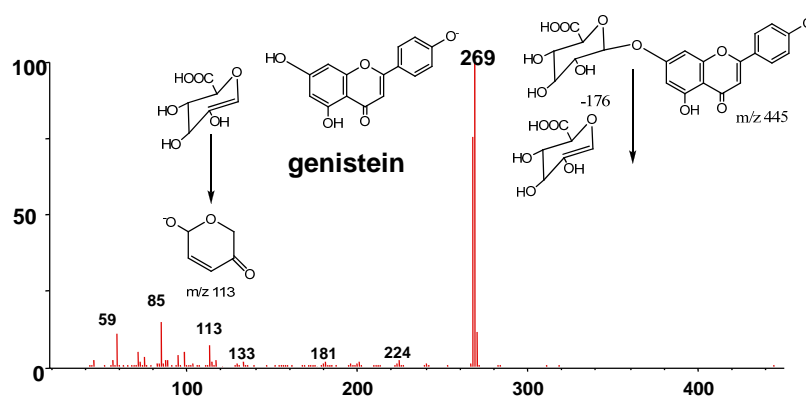


Ion fragmentation for identification of phase II drug metabolites (glucuronide/sulfate conjugates)

Feb 4, 2013

What fragment ions are characteristics for glucuronide conjugates?

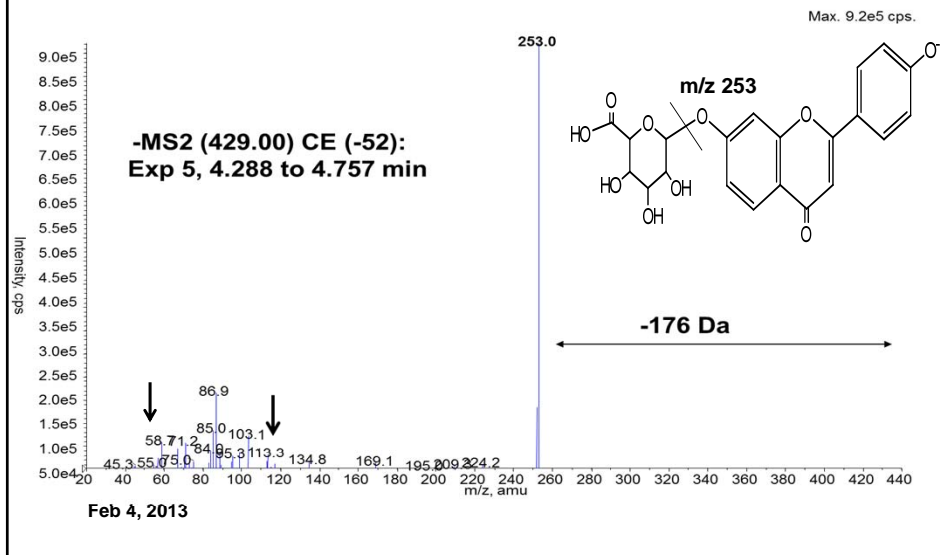
Product ion spectrum of genistein glucuronide in ESI-MS/MS



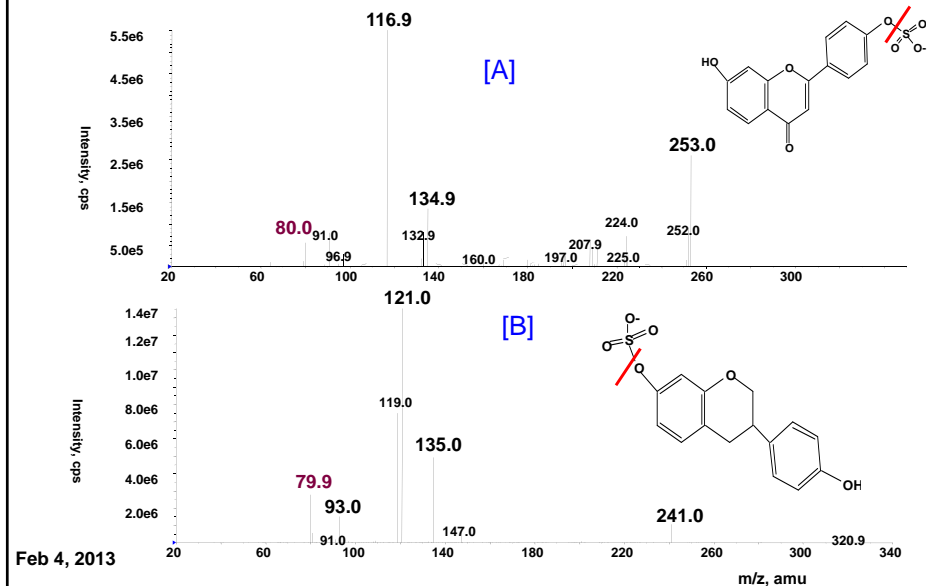
Glucosides/glucuronides conjugates are easily cleaved off by higher potential at orifice

Feb 4, 2013

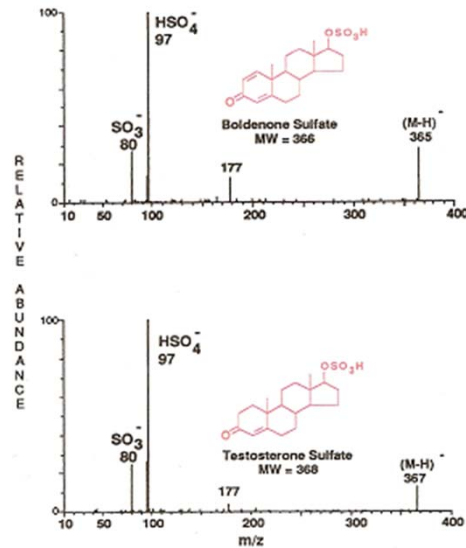
MSMS of m/z 429 indicate that it may be daidzein glucuronide



The loss of 80 Da from the parent ion and the presence of m/z 80 in the product ion spectra are the indicative of sulfate conjugates of like daidzein [A] and equol [B]



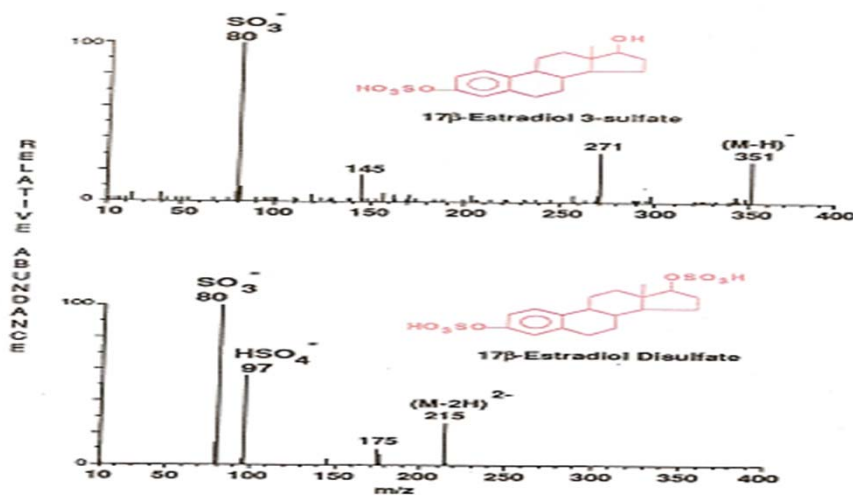
What happens with aliphatic sulfates in MS/MS?



Aliphatic and aromatic sulfate conjugates behave differently in MS/MS, aliphatic typically show m/z 97 (HSO_4^-) and m/z 80 (SO_3^-)

Feb 4, 2013

The absence of the m/z 97 fragment with the base peak m/z 80 makes the distinction between aromatic and aliphatic sulfates



Feb 4, 2013 Source: Weidolf et al. Biomed. and Environ. Mass Spec. 1988

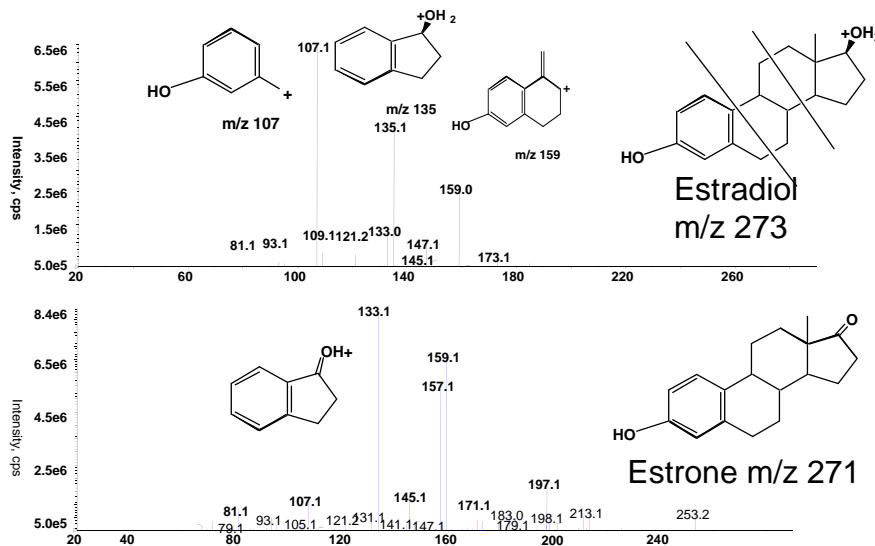
Characteristic fragmentation of drug conjugates by MS/MS

Conjugate	Ionization mode	Scan
Glucuronides	pos/neg	NL 176 amu
Hexose sugar	pos/neg	NL 162 amu
Pentose sugar	pos/neg	NL 132 amu
Phenolic sulphate	pos	NL 80 amu
Phosphate	neg	Precursor of m/z 79
GSH- conjugates	pos	NL 129 amu
taurines	Pos	Precursor of m/z 126
N-acetylcysteins	neg	NL 129 amu

Feb 4, 2013
NL = neutral loss.

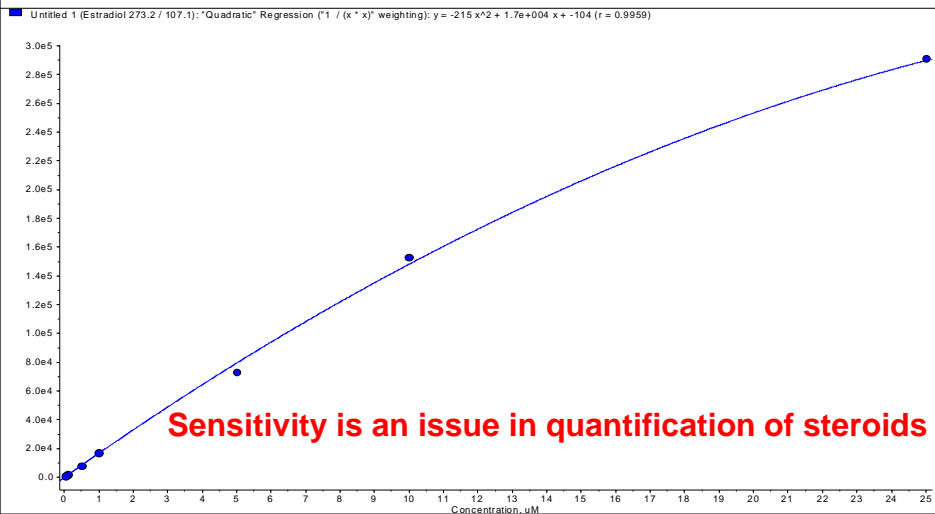
Kostiainen et al., 2003

Analysis of steroids by MS/MS



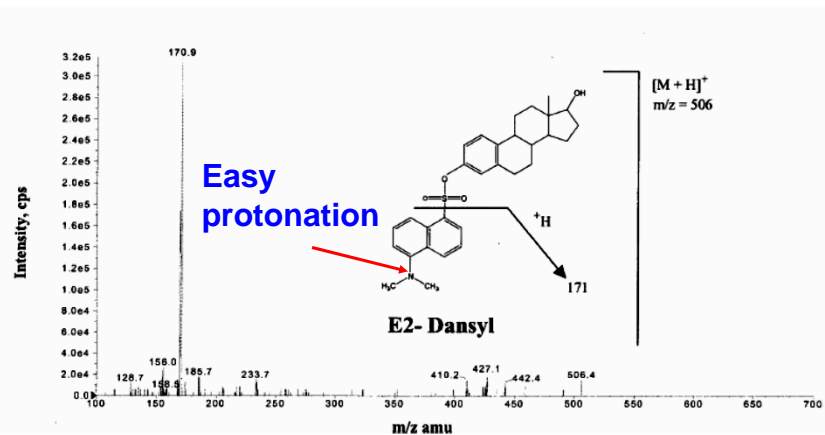
Feb 4, 2013

Estradiol Standard Curve 0.05 – 25 μM $r = 0.9959$



Feb 4, 2013

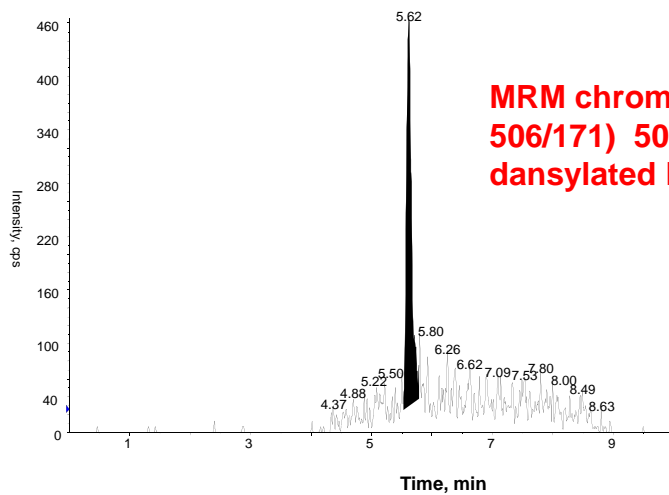
Derivatization of estradiol with dansyl chloride leads to the formation of E₂-dansyl (m/z 506)



Source: Nelson et al. Clinical Chemistry, 2004

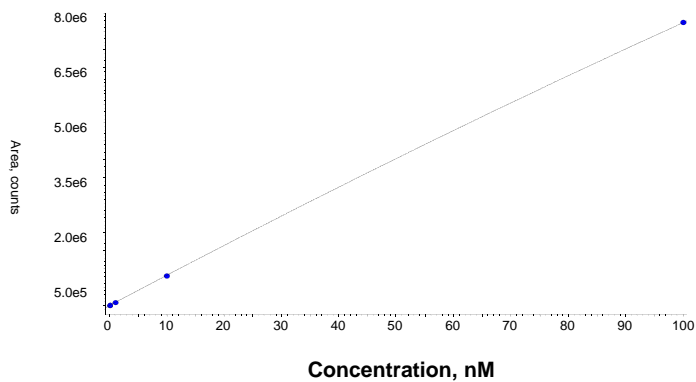
Feb 4, 2013

Derivatization tremendously helps increase sensitivity of E2



Feb 4, 2013

Calibration curve for dansylated E2 showing linearity from 0.005-100 nM concentration range ($r = 0.999$)



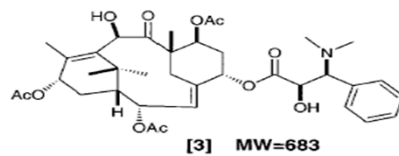
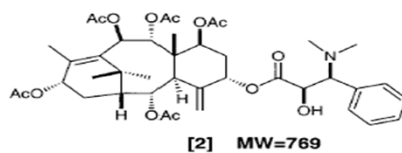
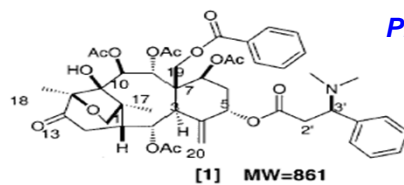
Feb 4, 2013

Substructure analysis in ESI-MS/MS (dereplication and partial identification of natural products)

Feb 4, 2013

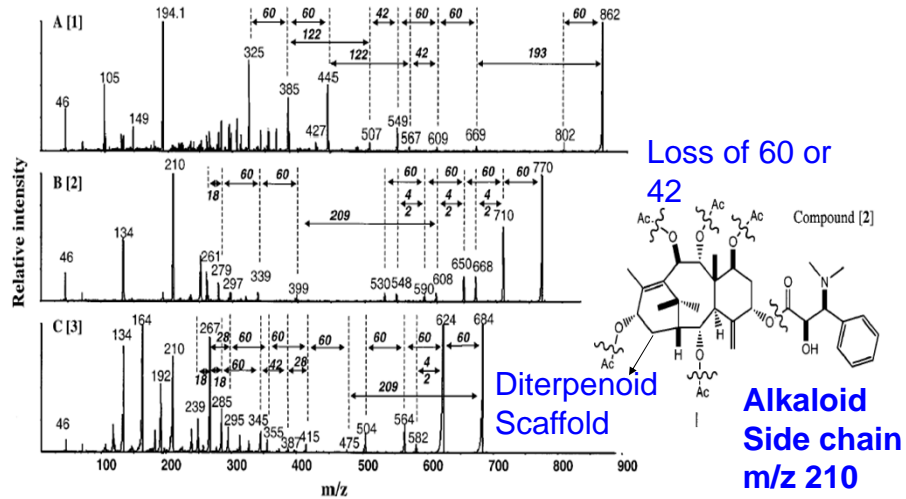
Fragmentation of basic taxoids from *T. Wallichiana* extract

Prasain et al. Anal Chem, 2001



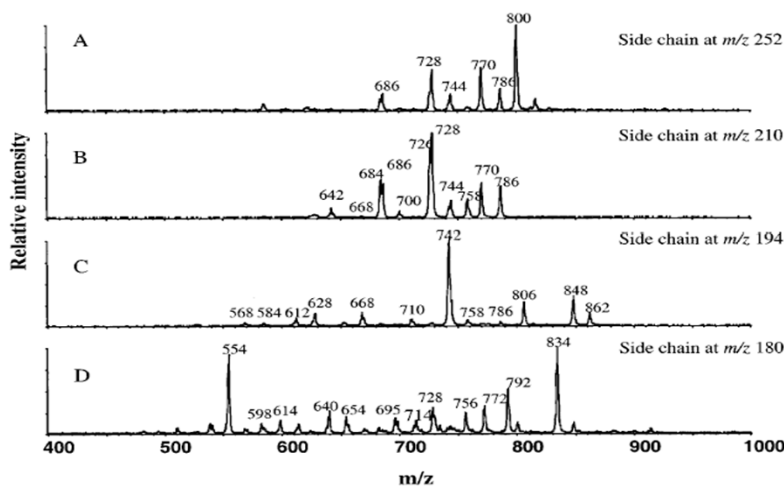
Feb 4, 2013

ESI-MS/MS spectra of taxoids (1-3). Peaks m/z 194 and 210 represent the intact alkaloid side chain.



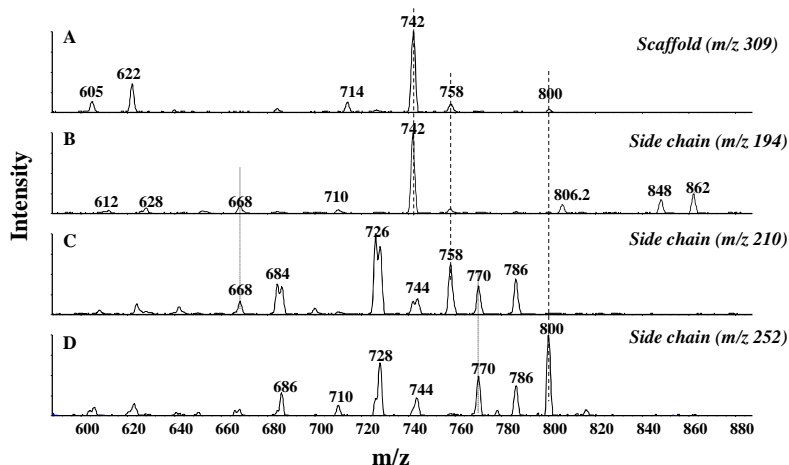
Feb 4, 2013

MS/MS precursor-scan spectra of typical alkaloid side chains to identify the basic taxoids compounds in an ethyl acetate extract of *T. wallichiana*.



Feb 4, 2013

Comparison of precursor scan spectra obtained from the scaffold m/z 309 and side chain m/z 194, 210 and 252



Taxoids with scaffold m/z 309 and alkaloid side chains are shown by dashed lines

Feb 4, 2013

References

1. Electrospray Ionization Mass Spectrometry by Richard B. Cole.
2. Stefanowicz P, Prasain JK, Yeboah KF, Konishi Y. Detection and partial structure elucidation of basic taxoids from *Taxus wallichiana* by electrospray ionization tandem mass spectrometry. *Anal Chem.* 2001;73:3583-9.
3. [Prasain J.K., Wang C.-C., Barnes S. Mass spectrometric analysis of flavonoids in biological samples. *Free Radical Biology & Medicine*, 37: 1324-1350, 2004.](#)
4. William Griffiths. Tandem mass spectrometry in the study of fatty acids, bile acids and steroids. *Mass Spectrometry Reviews*, 2003;22:81-152.
5. Yi et al., *Anal Bioanal Chem.* 2006.

Feb 4, 2013